

# Our Team



**Elements of  
Architecture, Inc.**  
Architects

**Dunaway  
Associates, L.P.**  
Civil Engineers

**R. L. Woods &  
Associates, LLC**  
Structural Engineer

**Torres Engineering  
Services, Inc.**  
MEP Engineers

**Rough Brothers,  
Inc.**  
Greenhouse Consultant

**Greenscape Pump  
Service, Inc.**  
Water Feature Consultant

# Our Process

To measure progress and allow for simultaneous collaboration between disciplines, Elements subdivided the FWBG property into natural boundaries or “ZONES” which established project milestones and insured cohesive assessments within our team.

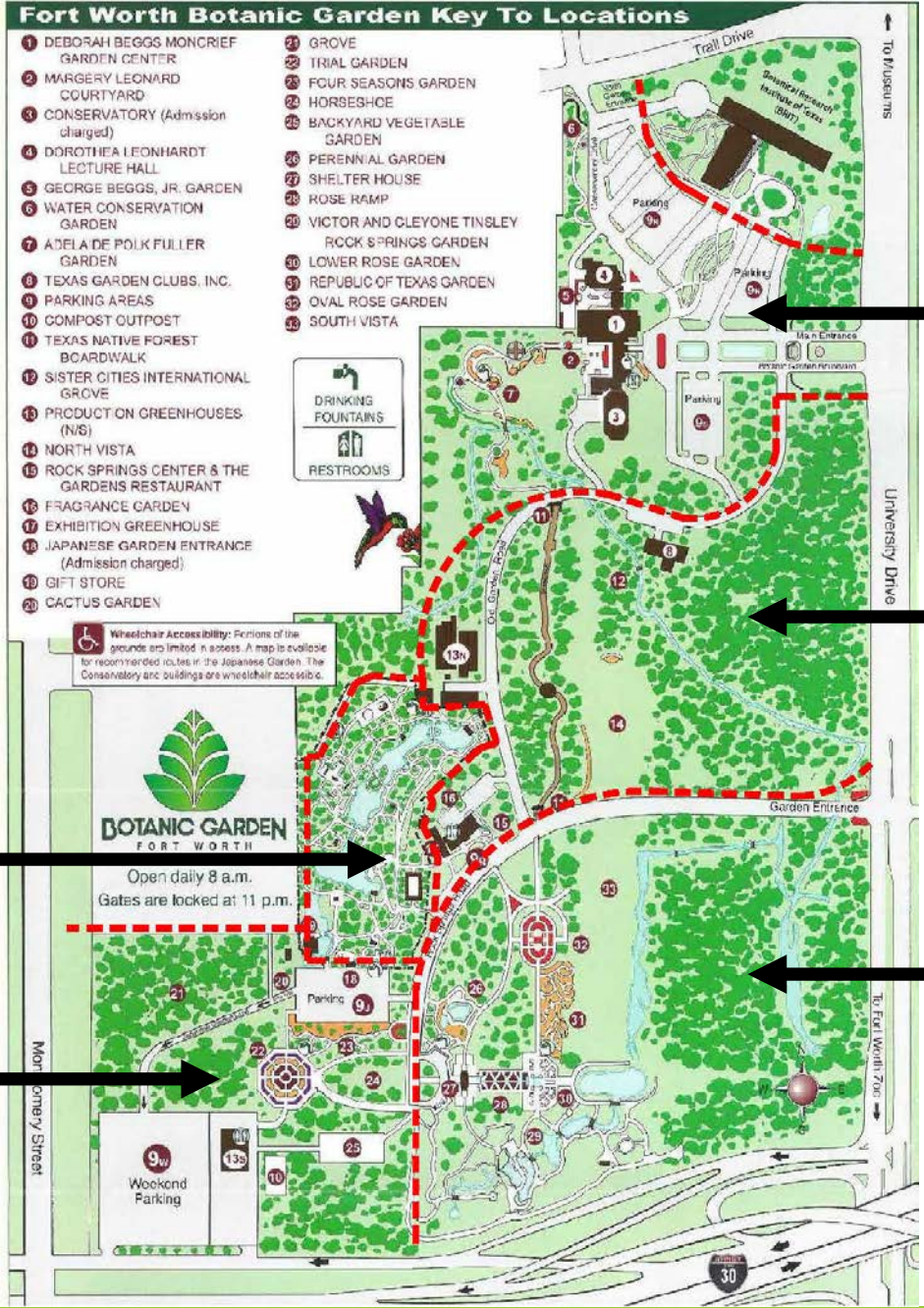
A decorative graphic on the left side of the slide consisting of several overlapping, curved green leaf-like shapes of varying shades of green.

Review existing documentation provided by FWBG, research supplementary data, and perform a series of site assessments within each ZONE.

Facilitate collaboration between disciplines concerning findings and potential issues within each ZONE.

Record findings, compile and make recommendations in a cohesive manner as individual ZONE chapters.

Perform internal reviews to address priorities and ensure our collaborative process is successful.



**ZONE 1**  
Key Locations: 1-7, 9N, 9S

**ZONE 2**  
Key Locations: 11-17

**ZONE 5**  
Key Locations: 25-33

**ZONE 3**  
Key Locations: 18

**ZONE 4**  
Key Locations: 9J, 9W, 20-25

# Executive Summary Examples

<b>Zone 1</b>	<b>\$5,076,087</b>
Conservatory	\$2,266,314
Deborah Beggs Moncrief Garden Center	\$1,431,059
Dorothy Leonhardt Lecture Hall	\$696,950
<b>Zone 2</b>	<b>\$6,758,376</b>
Parking Areas and Miscellaneous Site Areas	\$2,679,600
Production Fiberglass Greenhouse	\$1,001,880
Production Glass Greenhouse	\$691,866
<b>Zone 3</b>	<b>\$1,702,907</b>
Karesansui	\$476,100
Miscellaneous Site Elements	\$423,000
Waterfall	\$300,000
<b>Zone 4</b>	<b>\$266,061</b>
Weekend Parking	\$126,720
Trial Garden	\$46,770
Japanese Garden Parking	\$31,200
<b>Zone 5</b>	<b>\$1,965,530</b>
South Vista	\$846,000
Victor and Cleyone Tinsley Rock Springs Garden	\$787,314
Rose Ramp	\$159,600
<b>Grand Total</b>	<b>\$15,768,961</b>



**Deborah Beggs Moncrief  
Garden Center**



**Conservatory**



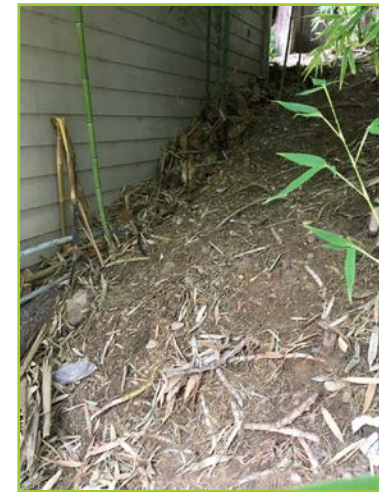
**Main Entrance**



**Internal Roadways**



**Production Fiberglass Greenhouse**



**Triplex Building**



**Rock Springs Center & Garden Restaurant**



**Production Glass Greenhouse**



**Quonset Storage Shed**





**Moon Bridge**



**Lake Arbor**



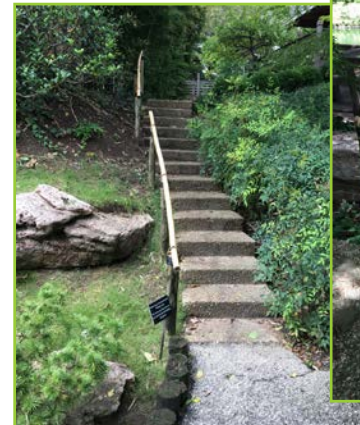
**Hill Arbor**



**Karesansui**



**East Walkway & Ramp**



**Pavilion  
Steps & Railings**





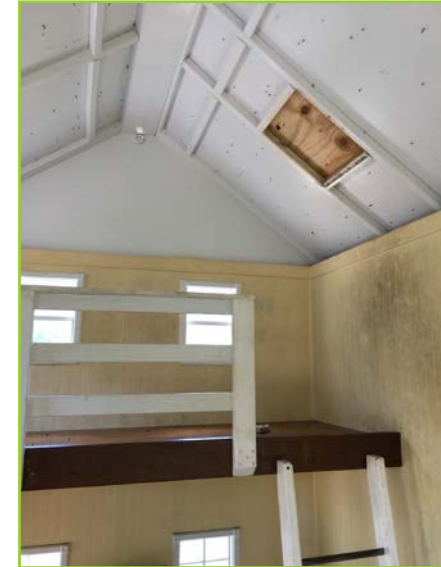
**Japanese Garden  
Parking Lot**



**Compost Outpost**



**South Production  
Greenhouse**



**Backyard Vegetable  
Garden**



**Weekend Parking Lot**

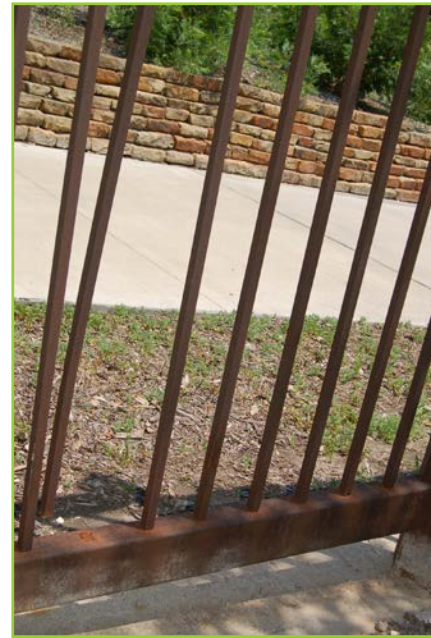


**Grove**





Shelter House



Victor and Cleyone Tinsley  
Rock Springs Garden



South Vista